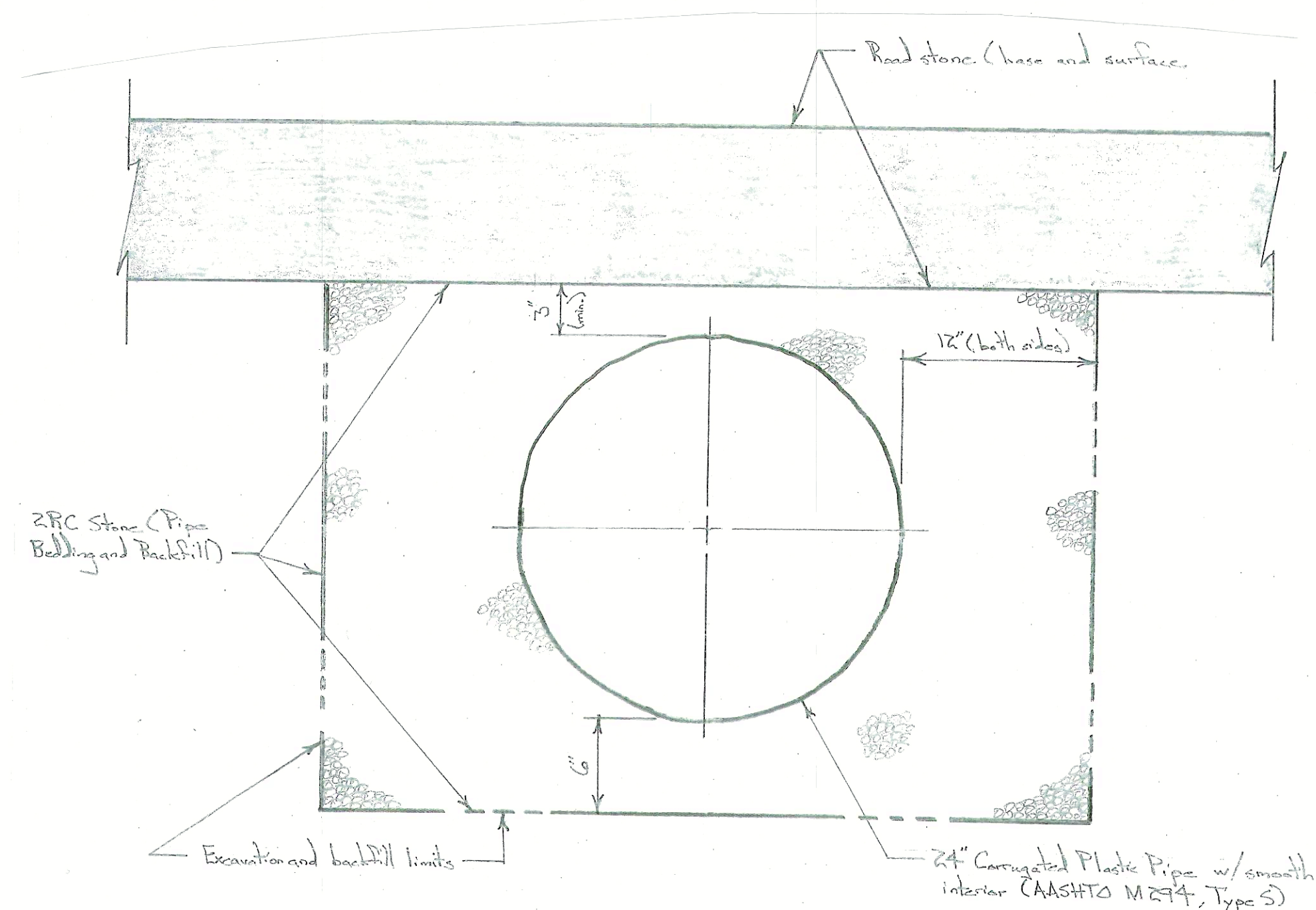


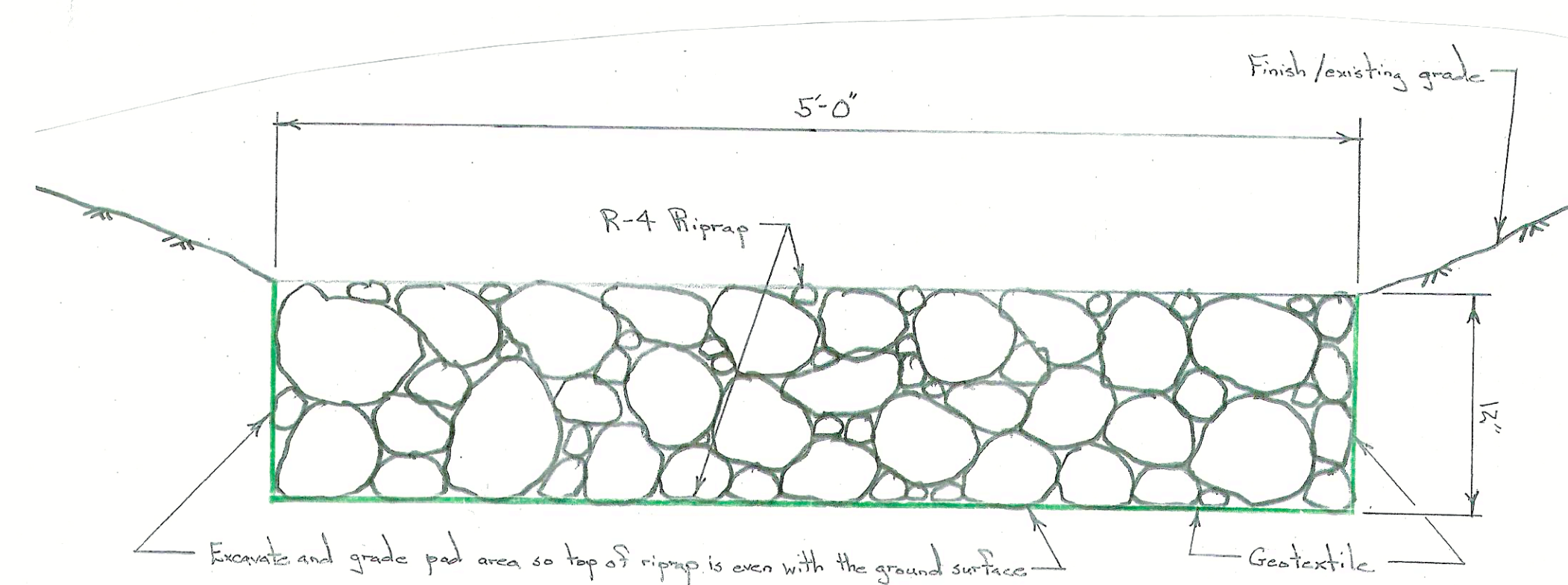
**DRAINAGE PIPE PLAN**

Scale: 1/2 in. = 1 ft.



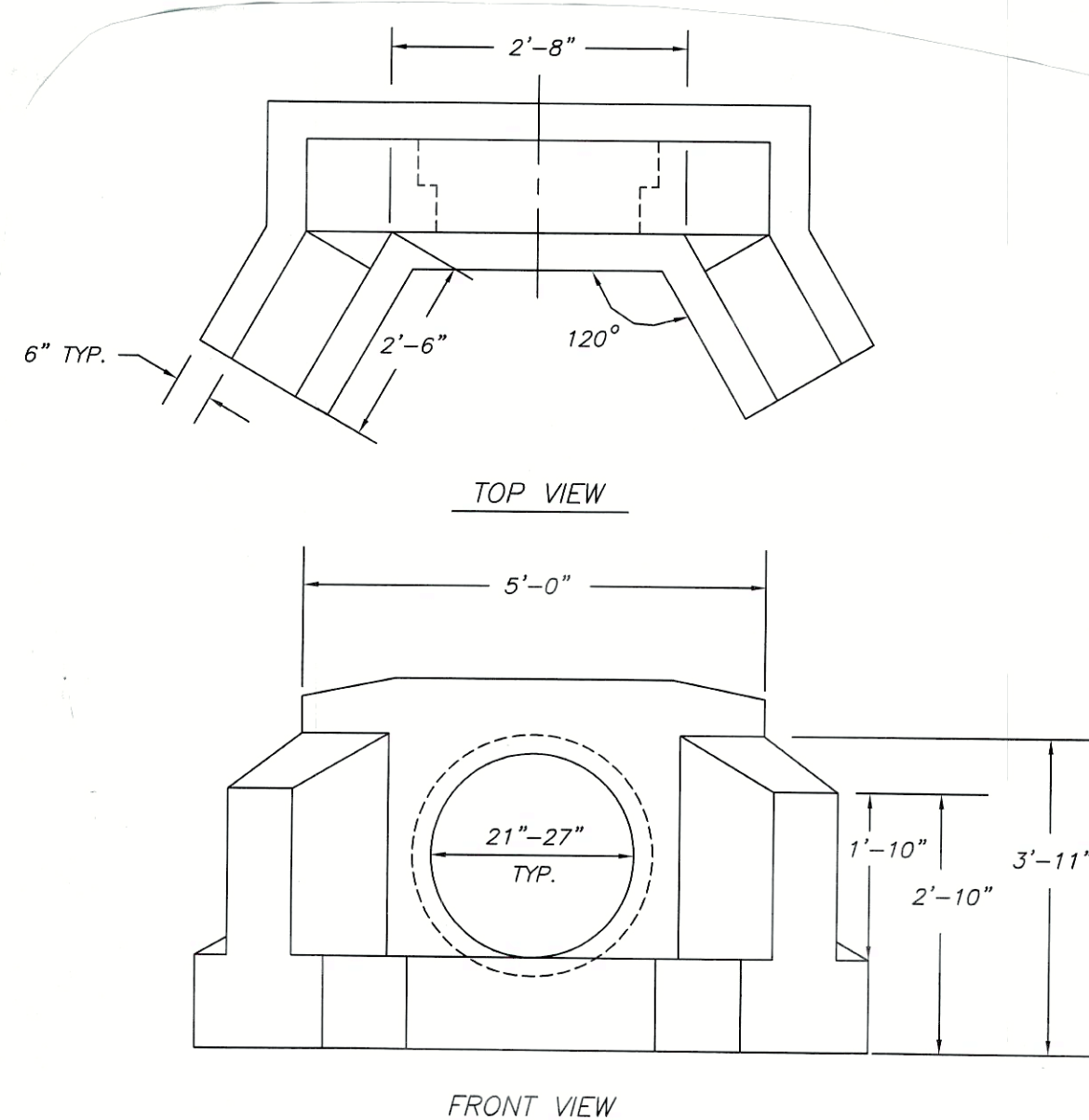
**DRAINAGE PIPE SECTION**

Scale: 1-1/2 in. = 1 ft.



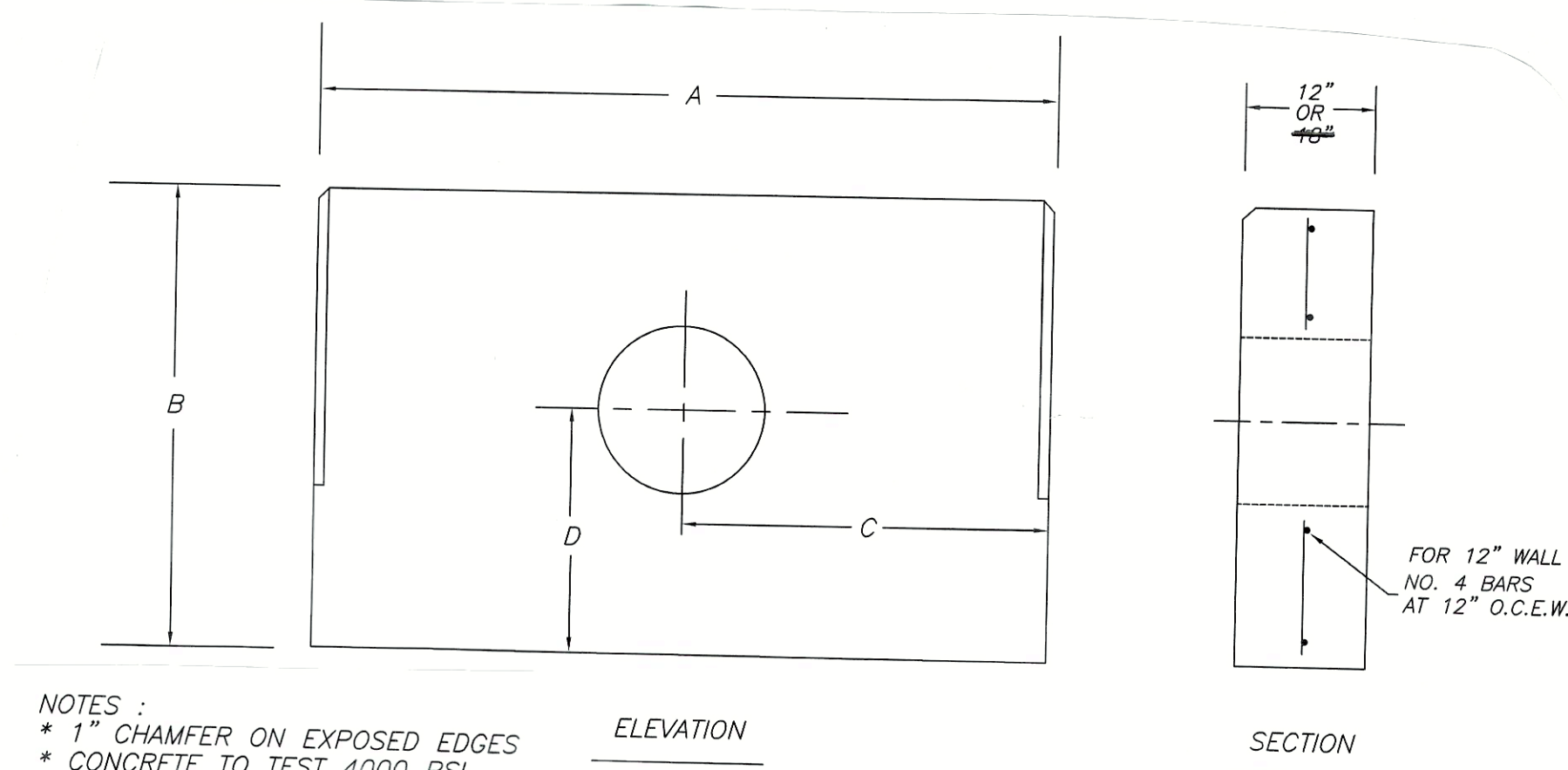
**RIPRAP SPLASH PAD SECTION**

Scale: 1-1/2 in. = 1 ft.



**24" WINGED HEADWALL**

- NOTES:
1. MINIMUM 4,000 P.S.I. CONCRETE AT 28 DAYS WITH 5.5% A.E.
  2. REINFORCEMENT—A.S.T.M. A615 GRADE 60, MINIMUM 1 1/2" COVER
  3. ALL EXPOSED EDGES ARE CHAMFERED 1"
  4. MATERIAL AND CONSTRUCTION SHALL COMPLY WITH PENN. D.O.T. PUB. 408
  5. APPROX. WEIGHTS:  
24" = 5,200 LBS.



- NOTES:
- \* 1" CHAMFER ON EXPOSED EDGES
  - \* CONCRETE TO TEST 4000 PSI @ 28 DAYS

PIPE DIA.	DIMENSION SCHEDULE				APPROX. WEIGHT
	A	B	C	D	
12"	40"	60"	24"	36"	3,000 LBS.
15"	54"	72"	32"	48"	6,300 LBS.
18"	68"	84"	40"	60"	10,500 LBS.
24"	120"	84"	60"	42"	10,500 LBS.

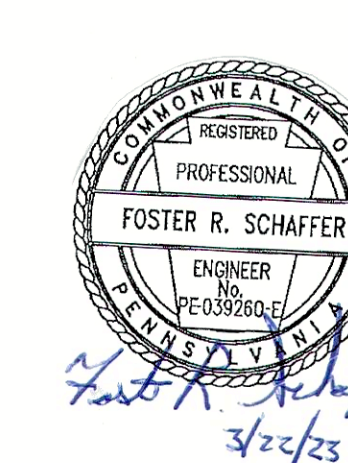
**FLAT HEADWALLS**

**HEADWALL DETAILS**

No Scale

**DRAINAGE PIPE NOTES**

1. The minimum fall in the new drainage pipes is 3-inches over a 10-foot length (slope of 0.025).
2. Pipes should cross the road to suit field conditions and existing drainage paths. New pipes are 20-feet long. Pipes should cross perpendicularly to the road or on a slight angle to suit flow patterns.
3. Perform minor grading at the inlet and outlet ends of the new and existing drainage pipes so that flow smoothly enters and exits the pipes.
4. Minimum cover over the new drainage pipes is 12-inches.
5. The depth of placement of the new drainage pipes can vary to meet field conditions. The downstream ends of the pipes can be deeper to meet field conditions and slope requirements.



PENNSYLVANIA GAME COMMISSION		
SGL #97	MONROE TWP.	BEDFORD CO.
WAPITI RD/DIGE ROAD MAINTENANCE PROJECT		
DRAINAGE PIPE DETAILS		
REVISIONS	PROJECT NO.	PGC-7-23-01
	DRAWN BY:	55
	DATE:	3/22/23
	SHEET NO.	3 OF 3